

Solid Waste Management Coordinating Board

---

# Annual Progress Report

---

## 1999

Accepted by the SWMCB on 4/26/2000

---

# Solid Waste Management Coordinating Board

Commissioner Susan Haigh, Chair, Ramsey County

Commissioner Paul McCarron, Vice Chair, Anoka County

Commissioner Dan Maher, Treasurer, Dakota County

Commissioner Jim Kordiak, Anoka County

Commissioner Jim Ische, Carver County

Commissioner John Siegfried, Carver County

Commissioner Joseph Harris, Dakota County

Commissioner Penny Steele, Hennepin County

Commissioner Peter McLaughlin, Hennepin County

Commissioner Victoria Reinhardt, Ramsey County

Commissioner Dick Stafford, Washington County

Commissioner Dennis Hegberg, Washington County

James L. Warner, P.E., MPCA

Sherry Enzler, Director, OEA

---

# TABLE OF CONTENTS

Summary .....	1
Source Reduction .....	5
Toxicity Reduction .....	10
Recycling.....	16
Processing.....	19
Landfilling .....	23
Solid Waste Regulation .....	25
NonMSW Management .....	27

## Appendices

- Appendix A: 1999 County MSW Managed Summary Report
  - Appendix B: Breakdown of HHW Collected and Managed, and HHW Costs
  - Appendix C: Breakdown of Hazardous Waste Generators Licensed and Registered in the Region, and Number of Inspections Performed
  - Appendix D: SWMCB 1999 Accomplishments
-

# SUMMARY

The Regional Solid Waste Master Plan ("Plan"), adopted December, 1998, sets forth a plan that will guide the region for twenty years, with a focus on the planning period of 1998-2003. The Plan incorporates an innovative planning approach, a joint vision and an emphasis on performance measurement. The Plan establishes regional outcomes, strategies to be implemented by the counties acting collectively as the SWMCB, and specific outcomes negotiated with each of the six member counties. Regional and county outcomes address:

- source reduction
- toxicity reduction
- recycling
- processing
- landfilling
- nonMSW management

The purpose of this Report is to summarize the progress of the region in meeting its regional outcomes and the progress of each county in achieving its county negotiated outcomes (CNO's). It is important to note that this report summarizes the first year of work and progress under the new Regional Solid Waste Master Plan.

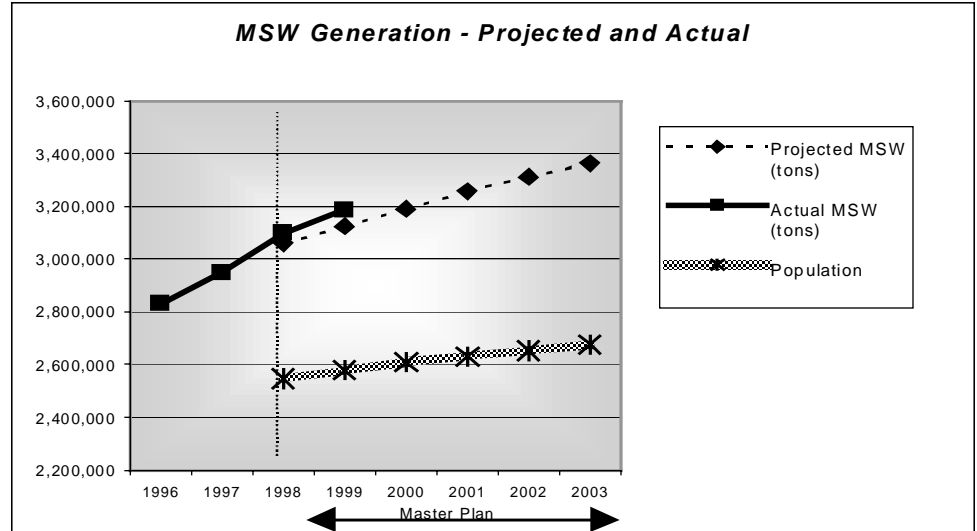
In 1998, the SWMCB prepared a Baseline Report that reflected the point from which progress on outcomes will be measured. This 1999 Results Report documents progress achieved in 1999 toward the SWMCB Regional Outcomes. Data sources, include county SCORE / Certification reports, program data, and the 1999 waste composition study. The 1999 Report also includes, for the first time, summary of activities and outcomes on county negotiated outcomes (CNOs).

## 1999 RESULTS

Measurable progress was achieved in several areas, including increased recycling tonnage and increased collection of household hazardous wastes. Source reduction results, however, fell short of Master Plan objectives. In 1999, the waste stream grew by 3% over 1998. This rate of growth exceeds the Master Plan projected growth rate, resulting in 63,000 more tons of MSW than anticipated. Landfilling continued to increase, while the percentage of waste processed decreased.

## Growth in Total MSW Managed (tons)

1996	1997	1998	1999	2003 (Outcome)
2,830,771	2,949,967	3,098,373	3,187,524	3,364,000



The region manages the waste generated by three primary waste management practices, recycling, processing and landfilling, as depicted below.

### MSW Managed in 1999 (tons - not including problem materials)



Recycling (R)	Landfilling (L)	Processing (P)
1,268,614	826,933	1,068,263

- While the percent of MSW recycled remained at about 48% (including 8% yard waste and source reduction credits), the tonnage of materials recycled increased over 1998 by 35,000 tons.
- Landfilling increased by about 103,000 tons over 1998. This increase resulted from additional out-of-State landfilling and additional landfilling of excess and non-processible material delivered to processing facilities. The amount of unprocessed MSW landfilled in-State remained about the same as in 1998.
- Appendix A shows the detail on how MSW was managed in 1999.

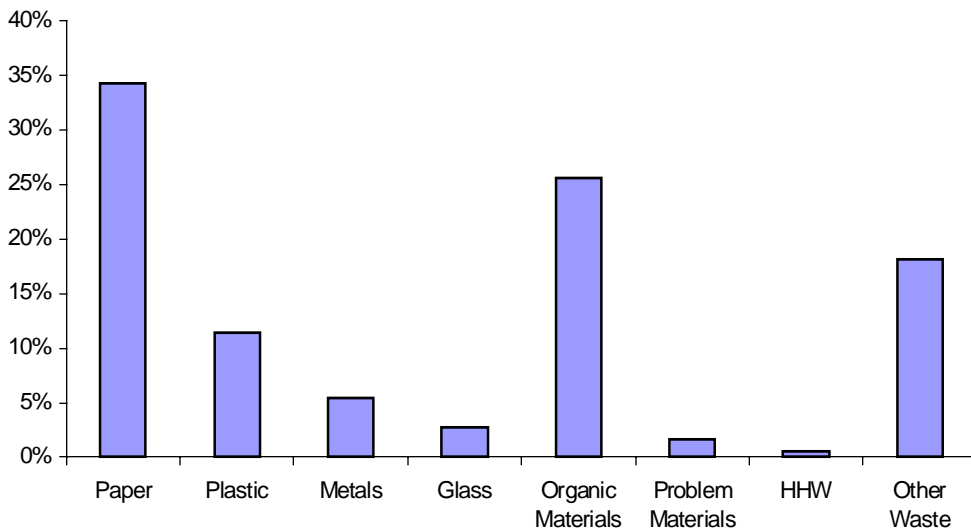
### Toxicity Reduction

Household hazardous waste programs continue to grow in program participation and amount of waste collected, while collection cost per vehicle decreased slightly from 1998 to 1999. The region served over 112,000 vehicles in 1999, collecting nearly eight million pounds of household hazardous waste.

The region continues to operate a regional hauler licensing program, issuing 259 base licenses and 661 operating licenses for the 1999-2000 license year.

### Waste Composition Study

In 1999, the SWMCB, OEA and MPCA conducted a waste composition study to determine the types of waste that comprise the waste stream. This information is critical to measuring results in the areas of source reduction and recycling, and also provides useful information to further shape solid waste programs. The following chart shows the relative amounts of waste types disposed of by metropolitan waste generators.



Further detail on the composition of MSW is shown in the following table, which shows that the waste targeted in the Regional Master Plan - food waste, OCC, and pallets, office paper - comprise significant percentages of the MSW stream.

<b>MATERIALS IN MSW – BY WEIGHT METROPOLITAN REGION</b>		
<b>Material</b>	<b>Quantity (in tons)</b>	
	<b>Low</b>	<b>High</b>
Food Waste – Residential	105,900	116,000
Uncoated OCC-recyclable – ICI	84,500	93,900
Mixed Paper-nonrecyclable – Residential	79,200	87,100
Wood Pallets – ICI	65,500	72,700
Miscellaneous – Residential	61,700	67,900
Mixed Paper-nonrecyclable – ICI	60,500	67,200
Mixed Paper-recyclable – Residential	58,900	64,800
Household Bulky Items – Residential	58,900	64,800
Other Plastics-noncontainers – ICI	55,500	61,700
Mixed Paper – recyclable – ICI	50,600	56,200
ONP – Residential	48,800	53,700
Other Plastics-noncontainers – Residential	36,800	40,500
Diapers – Residential	35,900	39,500
High-grade Officer Paper – ICI	34,800	38,700
Miscellaneous – ICI	34,800	38,700
Treated Wood – ICI	34,000	37,800
Uncoated OCC-recyclable – Residential	32,200	35,500
Treated Wood – Residential	31,300	34,400
Boxboard – Residential	29,500	32,400
<b>TOTAL</b>	<b>1,088,800</b>	<b>1,202,900</b>

# SOURCE REDUCTION

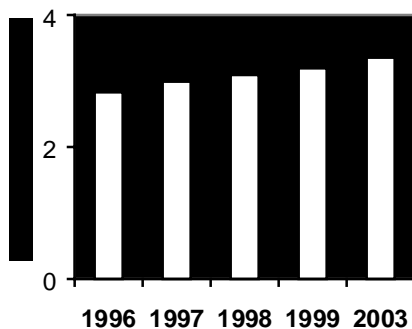
**PRINCIPAL OUTCOME:** From 2005 through 2017, per capita and per employee MSW generation rates will be no higher than the 1999 rates.

## Introduction

Source reduction, often called waste reduction or waste prevention, is the highest priority for managing waste at the national, state and regional level. The need for the reduction priority is clear. Waste generation continues to grow at increasing rates and the costs of managing the growth in the waste stream will be significant. If the waste is reduced at the source, these management costs will be avoided.

In 1999, total MSW from residential and commercial sources continued to grow, not only as a result of increases in population and employment, but also on a per capita basis.

## 1. TOTAL MUNICIPAL SOLID WASTE (MSW) MANAGEMENT



**Total Amount of MSW Managed (tons)**

1996	1997	1998	1999	2003 (Outcome)
2,830,771	2,949,967	3,093,346	3,187,524	3,364,000

- The region managed nearly 3.2 million tons of MSW in 1999; an increase of 3% over 1998.

### About the Indicator

Total MSW managed includes tons managed through recycling, problem materials managed, processing and landfilling. It does not include yard waste. Counties track this data through municipal recycling and facility reports. Commercial recycling is a combination of documented and estimated figures. Appendix A shows a breakdown of county-specific MSW management, including recycling, processing, and landfilling.

## 2. MUNICIPAL SOLID WASTE (MSW) MANAGEMENT PER CAPITA

As the following table shows, waste generation continues to grow at a rate that exceeds population and employment growth in the metropolitan area. While some per capital growth in waste is projected, the actual 1999 figures exceed the Master Plan projection of 1.20 tons per capita.

**Total Population and Amount of MSW Managed Per Person and Per Employee (tons)**

	1996	1997	1998	1999	2003 (Outcome)
<b>Tons Managed</b>	2,830,771	2,949,967	3,098,373	3,187,524	3,364,000
<b>Population</b>	2,411,311	2,440,110	2,468,761	2,493,400	2,586,498
<b>Employment</b>	1,397,678	1,421,956	1,446,647	1,468,300	1,547,563
<b>Residential Tons Per Person</b>	.53	.54	.56	.58	.59
<b>Commercial Tons Per Employee</b>	1.11	1.14	1.18	1.19	1.19
<b>Total Tons Per Capita</b>	1.17	1.21	1.26	1.28	1.30

Source: County SCORE and Certification Reports; Metropolitan Council Population and Employment Projections.

**About the Indicator**

The MSW stream, including recyclables, is estimated to be comprised of 45% residential waste and 55% commercial waste (this estimate was supported by the 1999 waste composition study). Appendix A shows a breakdown of county specific MSW management, as well as a breakdown of processing and landfilling practices.

**3. MATERIALS EXCHANGE**

The materials exchange program (MAX) was terminated in 1999 due to lack of results. The SWMCB is currently evaluating ways to encourage reuse in the commercial sector.

**4. SOURCE REDUCTION CNO ACTIVITIES**

This section shows progress on a sample of county negotiated outcomes for which counties have progress to report. All SWMCB counties participated fully in committing to CNOs during the master planning process, but the reporting on progress will occur at intervals, so only a portion of CNOs will be reported upon each year. Most CNOs are expected to be fully achieved by 2003.

**Intermediate Outcome: By 2003, the region will reduce office paper.**

County	County Negotiated Outcome (CNO)	Measure	Activities / Outcomes to Date
Carver	Concentrate its efforts on facilitating the reduction of office paper in government office buildings.	Conduct a waste reduction survey for government office buildings.	Survey conducted involving 54 government buildings.
Hennepin	Concentrate its efforts on facilitating the reduction of office paper in office buildings.	1) Promote BWRP to office related business org. 2) Conduct at least 35 waste assessments on office buildings/year	Begin door -to-door promotion of downtown buildings. Article in BOMA newsletter and flyers to downtown Business Council members.

**Intermediate Outcome: By 2003, the region will facilitate the reuse of material redirected from the waste stream for reuse.**

County	County Negotiated Outcome (CNO)	Measure	Activities / Outcomes to Date
Anoka	Concentrate its efforts on facilitating the reuse of residential materials (e.g., clothes, toys and small electronics).	Revise the Shop Used First Guide every other year.	Completely revised in 1999.
Dakota	Concentrate efforts in generating and analyzing data that will be used to develop stronger, more effective source reduction and reuse messages that target the residential sector.	Focus group results analysis and sharing of information	3 residential focus groups on source reduction were conducted in February 1999. Approximately 40 Dakota County residents participated. A written report was produced and shared with other SWMCB counties and OEA.

**Intermediate Outcome: By 2003, the region will reduce food waste.**

County	County Negotiated Outcome (CNO)	Measure	Activities / Outcomes to Date
Carver	Concentrate its efforts on reducing food waste through backyard composting.	Annually sponsor backyard bin distribution days for residents. Conduct a compost bin distribution survey using 20% of the residents who bought compost bins.	Used \$15,000 in 1999 for compost bin subsidy. 77% indicated that they have composted food waste.
Hennepin	Concentrate its efforts on reducing food waste in institutional food preparation.	1) Complete WA at County Central Food Facility and Adult Corrections 2) Conduct seminar at HCTechnical College for Chefs-in-Training 3) Evaluate reduction at County CFF and AC	Seminar for Chefs in training was held on 1/11/00.

**Intermediate Outcome: By 2003, counties will incorporate reduction and recycling guidelines at all county-operated facilities. The region will achieve a 10% reduction in the amount of waste generated at county-operated facilities, and the region will work with public entities to achieve reduction in facilities operated by public entities.**

County	County Negotiated Outcome (CNO)	Measure	Activities / Outcomes to Date
Anoka	Reduce waste generated at county-operated facilities by 10% by 2003.	a. Baseline year and measurement method for waste reduction. b. A.C. will report on county facilities with recycling programs for four material categories. c. A.C. will report on percent county facility waste recycled. d. Paper usage/reduction at county facility will be promoted.	a. Baseline year 1999, measurement will be per employee. b. 31 out of 46 facilities, the remaining facilities are park collections where only 3 glass, metal and plastic are collected. c. 70% of the waste was recycled at the courthouse and government center. d. Implemented the following programs; credit card purchasing system, oracle system, intranet and standardization of email for employees to reduce paper usage.
Dakota	Reduce waste generated at county-operated facilities by 10% by 2003.	Increase recycling efforts and adjust purchasing decisions to reduce the amount of MSW generated in its county-operated buildings.	County Administrator sent memo to Dept Heads supporting activities of Dakota Environmental Review Team (DERT) to reduce waste/increase recycled content purchasing. -- Preparing for May 2000 waste sort in Administration Building.
Hennepin	Reduce waste generated at county-operated facilities by 10% by 2003.	a. H.C. will develop baseline waste measurement indices. b. H.C.- Annual per employee waste generation measured by indices. c. In-house recycling program operational reports.	Develop baseline waste measurement indices. In 1999, the lbs./year for HC employee was 673 lbs.
Ramsey	Reduce waste generated at county-operated facilities by 10% by 2003.	Re: Baseline year and how to determine progress: Ramsey Co. measurement methodology and baseline year to be determined by 2000.	Baseline year and methodology have been determined: Quarterly visual measurements to be taken at 7 largest waste generating facilities in 1999-2000 to determine 2000 baseline, and again in 2003, along with mid-course measurements in 2001-2. Volumes will be standardized by per-employee factor for office-based facilities or per-resident factor for corrections facilities.

**Intermediate Outcome: By 2003, 50% of the region's households and businesses will be able to identify five specific source reduction activities they have practiced within the past 12 months.**

County	County Negotiated Outcome (CNO)	Measure	Activities / Outcomes to Date
Carver	Promote reduction through public information	Sponsor compost education classes 4 times a year for the next 3 years. Marcus-Start up waste-free Fridays involving 10 businesses. Brad-Promote reduction to all residents and businesses 4 times a year for the next 3 years through the Citizen. Promote reduction on County web-site.	Conducted 3 classes in 1999.
Hennepin	Provide on-site waste assessment to 100 businesses annually and will assist an additional 1,000 businesses annually through advertising, outreach and other public education strategies through 2001, and then will evaluate the results of the assistance to determine its subsequent reduction initiatives.	1) Number of waste assessments completed 2) Number of Res Waste Management Guides mailed out 3) Number of telephone consultations 4) Number of times BWRP video aired 5) Number of presentations and booths at business related functions 6) Complete BWRP program evaluation 7) Phone survey of clients provided phone consultation	48 waste assessments were completed, 1750 waste management guides were mailed, 250 telephone consultations, the BWRP video aired seven times on cable television, 18 BWRP presentations were made, 40 BWRP evaluations were completed and 185 client telephone surveys were completed.
Ramsey	By 2003, offer all known non-household waste generators at least two opportunities to receive education, consultation and technical assistance on source reduction, and focus additional commercial outreach efforts on reduction of waste cardboard and office paper from office buildings and on reduction of food waste through food-for-people programs.	Number of outreach opportunities provided and presence of source reduction and technical assistance offerings. Portion of outreach opportunities that included targeted messages on waste cardboard, office paper, and food-for-people programs.	Since 10/99 about 100 licensed food establishments in Ramsey Co. have been contacted with information about food waste reduction and food-for-people projects.
Ramsey	Work with other entities in the county to ensure that residential source reduction messages are consistent and frequently provided. The County will ensure that every household is offered source reduction messages at least once per year.	Number of source reduction messages presented to residents by the County and number of collaborative projects with other entities to prepare and disseminate those messages.	Both 1999 issues and the April 2000 issue of Trash Today, distributed to all Ramsey and Wash. Co. households by the Ramsey/Washington County Resource Recovery Project (R/WCRRP), included residential source reduction messages (e.g., 'Goal is Less Trash,' 'Stone Soup Thrift Shop,' 'Curbside Collection of Kids Books,' 'Want to Lose 8,000 Pounds?--Trim Trash.')

**Intermediate Outcome: Generators will be informed consumers of waste management services and will have an understanding of generator responsibilities and liabilities.**

County	County Negotiated Outcome (CNO)	Measure	Activities / Outcomes to Date
Washington	Work to have its generators be informed consumers of waste management services and to have its generators understand the benefits and impacts of their disposal practices.	Provide semi-annual newsletter to inform consumers of waste management services. - Conduct focus groups to determine level of knowledge	One spring and one fall newsletter was distributed to all County residents. Additionally, Trash Today was delivered to all County residents.

# REDUCTION IN TOXIC/HAZARDOUS CHARACTER OF WASTE

<b>PRINCIPAL OUTCOME 1:</b>	By 2003, the toxic/hazardous character of MSW will be reduced.
<b>PRINCIPAL OUTCOME 2:</b>	By 2017, manufacturers and retailers will take responsibility for consumer products that contain toxic or hazardous components when the product becomes waste.

## Introduction

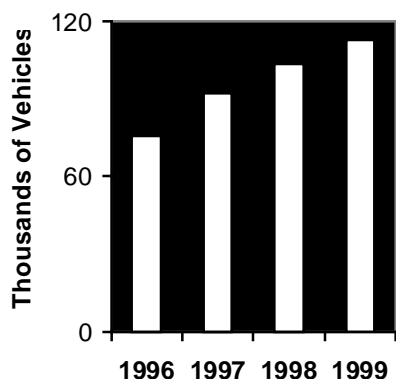
The Metropolitan Solid Waste Management Policy Plan requires the region to give source reduction and the reduction of toxic/hazardous waste the highest priority in planning for and development of the regional solid waste management system (Policy 5.1.2.1). The Regional Solid Waste Master Plan includes implementation strategies to support achievement of outcomes, including:

- Emphasis on product stewardship to shift responsibility for managing products with toxic/hazardous components to manufacturers and retailers.
- Continued collection and management of HHW that is not being managed through private sector initiatives.
- Increased coordination of hazardous waste regulatory activities including education and technical assistance.
- Strengthened regional and State collaborations through the Reciprocal Use Program and MPCA HHW Contract.

Two major product stewardship initiatives were launched in 1999 – the Latex Paint Task Force and the CRT Task Force. These task forces are comprised of private sector representatives of retail, manufacturing, and processing businesses, as well as public sector parties. The Latex Paint Task Force met throughout 1999 to develop solutions related to the increasing amount of waste latex paint being delivered by residents to HHW sites, and the corresponding increase in cost to county taxpayers. The CRT Task Force, established under a partnership agreement between the SWMCB and the OEA, also began meeting in late 1999 to address several objectives including preparing recommendations for increasing the recycling and recovery of CRTs in Minnesota.

The following indicators demonstrate achievements of county and regional programs.

## 1. HOUSEHOLD HAZARDOUS WASTE (HHW) PROGRAM PARTICIPATION



Total Vehicles Served at HHW Sites

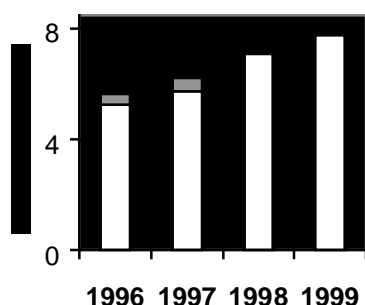
1996	1997	1998	1999
75,475	92,143	103,425	112,523

- The number of vehicles served at HHW facilities in the six county region increased by nearly 9% between 1998 and 1999, and has increased by 49% since 1996.
- Reciprocal use grew from 2,703 vehicles in 1998 to 3,363 in 1999, a 24% increase.
- In addition to providing a needed service to residents, HHW drop-off locations provided an opportunity to provide information to residents about purchasing decisions and waste management practices.

### About the Indicator

Vehicles served represents a general indication of the level of participation in HHW programs. Counties also estimate number of households served based on information provided by participants. In 1999, 112,523 vehicles represented 132,285 households served, or about 14% of the number of households in the region.

## 2. AMOUNT OF HHW COLLECTED



Total Amount of HHW Managed (Pounds)

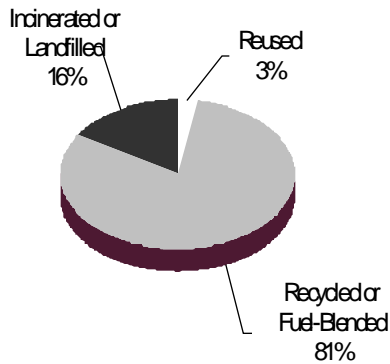
1996	1997	1998	1999
5,065,695	6,242,833	7,101,565	7,785,998

- Pounds of material collected increased by 10% from 1998 to 1999. (Excludes paint cans, represented by shaded areas in graph.)
- Pounds of materials collected has increased by 54% since 1996. (Excludes paint cans, represented by shaded areas in graph.)

### About the Indicator

Some wastes are weighed, such as batteries, but many of the waste streams are measured with volume measures such as gallons or drums. These volume measures are converted to pounds so that a total figure can be calculated and trends assessed. Conversion factors are based on actual samples of wastes collected at metropolitan program sites.

### 3. HOW HHW WAS MANAGED

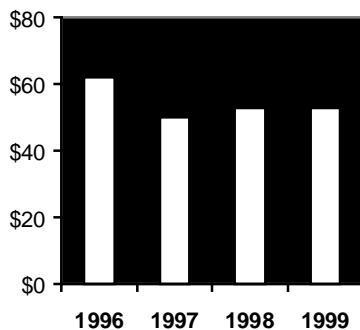


- In accordance with Minnesota's waste management hierarchy, most HHW collected was recycled or fuel-blended. In addition, reuse shelves provide a popular service to residents while maintaining the value of products that would otherwise become waste. Wastes that cannot be reused, recycled or fuel-blended are managed at hazardous waste incinerators or landfills.
- Percent reused, recycled or fuel-blended and percent landfilled or incinerated remained constant from 1998 to 1999.

#### About the Indicator

Appendix B shows a breakdown of waste types collected and how each waste was managed.

### 4. PROGRAM COST PER VEHICLE



Program Cost Per Vehicle

1996	1997	1998	1999
\$61.90	\$49.67	\$52.47	\$52.49

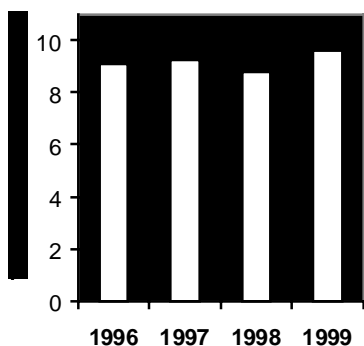
- Cost per vehicle remained nearly the same from 1998 to 1999; cost per vehicle has declined by 15% since 1996.

#### About the Indicator

Cost per vehicle is the figure used by counties as the basis for reciprocal use charges. Costs reflected here are net of certain revenues such as donations, reimbursements, citizen fees, etc., which represent approximately 5% of total program costs.

Appendix B shows a breakdown of 1998 and 1999 costs.

## 5. LICENSED HAZARDOUS WASTE GENERATORS



**Number of Licensed Hazardous Waste Generators**

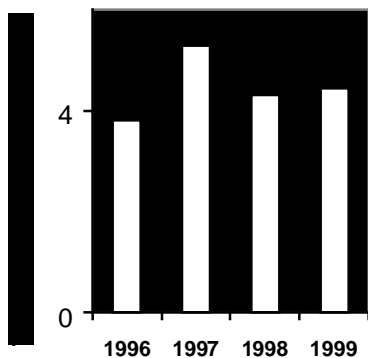
1996	1997	1998	1999
9,099	9,260	8,773	9,591

- The number of licenses and registrations issued is higher than the 1998 licensed generator figure. This is due to reflecting 3,177 minimal generators in the 1999 licensed generator figure. Two counties, Dakota and Hennepin, now register or license minimal generators. If minimal generators are removed, the number of licensed generators declined from 1998 to 1999 by 2,359.

### About the Indicator

Appendix C shows a breakdown of large, small, and very small and minimal quantity generators licensed in the region.

## 6. HAZARDOUS WASTE INSPECTIONS



**Number of Licensed Hazardous Waste Inspections**

1996	1997	1998	1999
3,785	5,315	4,252	4,460

- The number of inspections performed increased over 1998, including inspections of minimal generators.

### About the Indicator

Appendix C shows a breakdown of inspections performed in the region.

7. **REDUCTION IN TOXIC/HAZARDOUS CHARACTER OF WASTE CNO HIGHLIGHTS**

This section shows progress on a sample of county negotiated outcomes for which counties have progress to report. All SWM/CB counties participated fully in committing to CNOs during the master planning process, but the reporting on progress will occur at intervals, so only a portion of CNOs will be reported upon each year. Most CNOs are expected to be fully achieved by 2003.

***Principal Outcome: By 2003, the toxic/hazardous character of MSW will be reduced. By 2017, manufacturers and retailers will take responsibility for consumer products that contain hazardous components when the product becomes waste.***

County	County Negotiated Outcome (CNO)	Measure	Activities / Outcomes to Date
Anoka	Provide convenient year-round access to HHW services for County residents that include reuse opportunities by the end of 2000.	a. Year-round HHW facility to be open by December 31, 2001. b. Number of critical violations noted per inspection will decrease. c. Inspection frequency will be in accordance with the Environmental Services Unit protocol (risk based, determined by size and type of waste). d. Number of training opportunities offered to, attended by HW, and used oil generators.	a. Year-round facility opened August 11, 1999. b. 1999 is to be the base year and the computer system is not in place to track violations in 2000. c. 474 inspections were made on 372 generators. d. Approximately 50 generators were referred to Ramsey and Hennepin County training opportunities in 1999. Quarterly training sessions for the year 2000 were planned.
Carver	Provide convenient year-round access to HHW services.	HHW collection service will remain available year round. Open permanent HHW facility.	Due to inclusion with Public Works building facility, newly constructed HHW facility building scheduled to open in Spring 2001.
Dakota	Continue to have waste haulers and solid waste facilities remove and properly manage any hazardous materials that are improperly disposed by the generator. Based on the results of a pilot program, the County will provide a collection program for HHW at sanitary landfills and at other specified facilities.	Pounds of HHW collected at solid waste facilities	In 1999, 5115 pounds of HHW was collected from landfills in Dakota County -- In the 4th qtr of 1999, Burnsville Sanitary Landfill collected 7.06 tons of electronics for proper management.
Hennepin	Focus on providing education to citizens and businesses on hazardous waste collection and prevention programs, and placing more emphasis on manufacturer responsibility and waste reuse and recycling.	County offers business collections for fluorescent tubes, pesticides and VSQG waste.	In 1999 there were 4,326 VSQG's licensed in Hennepin County and 109 VSQG's participated in the County's collection program for VSQG's.
Ramsey		Transfer Stations * Determine that transfer stations have established procedures for inspecting loads, removing observed haz. waste, and properly managing said haz. waste, during transfer station inspection. (2000, 2004) * Percent of transfer stations found in violation of improperly managing haz. waste decreases.	Of 34 transfer station inspections performed in 1999, haz. waste-related violations were noted on 8 inspections or approx. 24% of the inspections. Of those 8 violations noted during 8 separate inspections, they were split evenly between two of the seven tr. stations; five tr. st. had no such violations.

**Intermediate Outcome: By 2003, manufacturers and retailers will demonstrate greater responsibility for reducing the amount of toxic/hazardous components of consumer products, and for managing these products when they become waste, focusing on products containing heavy metals and pesticides. In addition, households and businesses will use fewer products containing toxic/hazardous components and reduce the amount of the product used.**

County	County Negotiated Outcome (CNO)	Measure	Activities / Outcomes to Date
Washington	Establish, by 1999, a system for reuse, lease take-back or proper management for electronic equipment used by the County.	Documentation of proper management of county electronic equipment	A system was created within the County to ensure proper management of computer equipment. All computer equipment will either be designated for reuse by the Computers for Schools program or will be sent to a recycler for proper management.
Dakota	Continue a system for reuse, lease take-back or proper management system for electronic equipment used by the County.	% of electronics properly managed based on internal review	In 1999 over 6500 pounds of County-generated electronics were managed through Materials Processing Corporation.

**Intermediate Outcome: By 2003, 50% of households, businesses, and government entities will be able to identify three actions they have taken within the last twelve months to reduce the amount of toxic/hazardous materials purchased or to properly dispose of materials that contain toxic/hazardous materials.**

County	County Negotiated Outcome (CNO)	Measure	Activities / Outcomes to Date
Anoka	Continue to include reduction methods and proper management of HHW in its public information.	Number of outreach to non-licensed hazardous waste generators based on compliance and waste management.	340 generators were visited 405 times. 69 businesses visited 86 times.
Carver	Continue to include reduction methods and proper management of HHW in its public information.	Include HHW info on County web site. Place a minimum of 20 newspaper advertisements and utilize the Carver County Citizen.	HHW info includes in website, 20 ads for 2000.

**Intermediate Outcome: Government will be a leader in the use of substitute products that do not contain toxic/hazardous materials and also will use reprocessed and recycled hazardous wastes where appropriate.**

County	County Negotiated Outcome (CNO)	Measure	Activities / Outcomes to Date
Dakota	Work with the County's Parks, Highway and Facilities Management Departments to review the use of pesticides and fertilizers to determine if less hazardous products could be substituted, and if not, review the level of chemicals added, with the objective of lessening the impact of the chemicals on the environment.	Number of chemical uses reviewed for reduction potential	Env Mgmt staff reviewed 12 areas of chemical use and identified 2 areas where impact on the environment could be lessened. The Physical Development Division increased their use of nontoxic cleaners in 1999. -- Environmental Mgmt reviewed the County's cleaning contract and provided language pertaining to nontoxic cleaners.

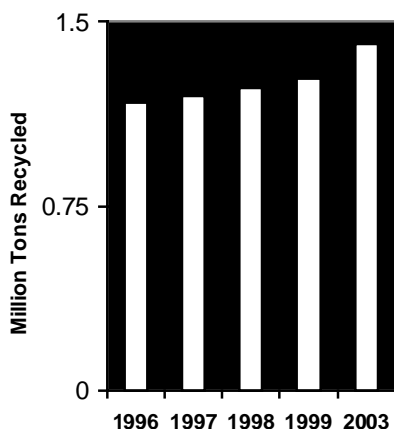
# RECYCLING

**PRINCIPAL OUTCOME:** Collectively, the region will achieve at least a 50% MSW recycling rate (including a 3% source reduction and 5% yard waste credit) every year, through 2003.

## Introduction

Recycling is an integral component of the integrated waste management system and supports the Policy Plan goals of landfill abatement, resource conservation and generator responsibility.

## 1. PERCENT OF MSW RECYCLED – COMMERCIAL AND RESIDENTIAL



**Amount of MSW Recycled as a Percentage of Total MSW**

	1996	1997	1998	1999	2003 (Outcome)
<b>Total Tons</b>	1,168,747	1,203,525	1,231,525	1,268,614	1,413,000
<b>Percent with credits</b>	49.3%	48.8%	47.8%	47.8%	50%
<b>Percent without Credits</b>	41.3%	40.8%	39.8%	39.8%	42.0%

Source: County SCORE and Certification Reports.

- The percent of recycling peaked in 1995 and 1996; thereafter the region experienced a slight decrease in percent of material recycled.
- Though the percentage of tons has not increased since 1995, total tons recycled continues to increase as the amount of MSW generated increases. An additional 35,000 tons of recycling occurred in 1999 over 1998.
- In 1999, the region did not meet the principal outcome of achieving 50% recycling.

### About the Indicator

Recycling percentage is calculated in two steps: first as a percentage of total MSW, then, counties are authorized by the Minnesota Office of Environmental Assistance to add a credit of up to 8% to the tonnage percentage if waste reduction and yard waste programs are in place.

A significant portion of commercial recycling is estimated. Residential tonnages are documented through municipal programs and drop-off sites.

## 2. RECYCLING CNO ACTIVITIES

This section shows progress on a sample of county negotiated outcomes for which counties have progress to report. All SWMCB counties participated fully in committing to CNOs during the master planning process, but the reporting on progress will occur at intervals, so only a portion of CNOs will be reported upon each year. Most CNOs are expected to be fully achieved by 2003.

***Principal Outcome: Collectively, the region will achieve at least a 50% MSW recycling rate (including a 3% source reduction and a 5% yard waste credit) every year, through 2003.***

County	County Negotiated Outcome (CNO)	Measure	Activities / Outcomes to Date
Dakota	Work with the public and private sectors to maintain household recycling rates at 1997 levels.	Change in recycling rate from 1997, measured in pounds/HH.	Distributing 5200 recycling containers to new residents through cities From 1997 to 1998, residential recycling increased from 632 lbs./household/year, to 643 lbs./household/year.
Hennepin	Focus on increasing the recycling participation rate of households.	Lbs./hshld. & total tons collected	Avg. lbs./HH = 724 Avg. participation rate=70.86
Ramsey	Work with municipalities to achieve a countywide increase in the number of households participating in municipally-sponsored, single-family curbside recycling services by 2003.	Percentage of respondents to County survey of residents who report they recycled during the past 12 months.	1999 County survey of residents: 96% reported recycling a portion of their household trash during the past 12 months.

***Intermediate Outcome: By 2003, 80% of the region's businesses that generate old corrugated cardboard or office paper waste will regularly practice reduction or recycling.***

County	County Negotiated Outcome (CNO)	Measure	Activities / Outcomes to Date
Anoka	Identify businesses that generate cardboard and office paper and will provide information to those businesses on how to reduce and recycle cardboard and office paper.	Tons of cardboard recycled as reported in the SCORE report.	Residents recycled 1,054.69 tons of cardboard in 1999. AC businesses recycled 7,105.26.
Carver	Maintain its current efforts to facilitate the reduction and recycling of office paper.	Survey all county departments regarding the recycling of office paper.	Surveyed 27 County departments in December 1999. Results show a 75% recycle rate throughout County Office buildings.
Hennepin	Focus efforts on its Business Waste Reduction/Recycling Program.	100 waste assessments/yr; 1,000 assisted through phone & other assistance	48 waste assessments, 250 telephone consultations were completed in 1999
	Separate cardboard and wood waste at its transfer stations and at HERC.	Tons of OCC and wood waste collected.	24 tons of wood waste delivered to the Freeway Transfer Station was sorted and sent to a wood processing facility.

**Intermediate Outcome: The region will target materials, collection and marketing strategies that result in the collection and recycling of the most materials for recycling at the least possible cost.**

County	County Negotiated Outcome (CNO)	Measure	Activities / Outcomes to Date
Anoka	Annually target its efforts on one material and work with haulers to provide technical assistance to municipalities and businesses on the most cost-effective method for collection of these materials.	Information collected and summarized on the level and type of recycling service available.	Information on the type of program, service available and materials collected are collected annually. The type of material and services available are printed in our Reduce Reuse Recycle guide and on municipal sheets every year.

**Intermediate Outcome: The growth in the recycling industry will keep pace with the rate of overall economic growth in Minnesota and will reflect the changing market needs resulting from a change in the composition or quantity of materials found in the waste stream. The region will act as a leader in the procurement of products with recycled content.**

County	County Negotiated Outcome (CNO)	Measure	Activities / Outcomes to Date
Hennepin	Increase the procurement of environmentally responsible products that contribute to sustainability.	1. establish baseline of products being purchased 2. adopt env. responsible procurement procedures. 3. enhanced employee education program 4. annual increase from baseline	Draft of environmental purchasing plan developed.

# PROCESSING

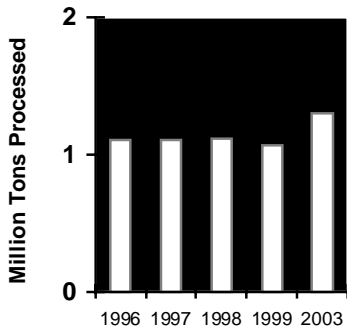
**PRINCIPAL OUTCOME:** By 2017, the region will process 65% of the MSW that has not been reduced or recycled.

**Introduction**

The Policy Plan provides that it is the Policy of the region that all MSW that is not reduced or recycled will be processed to the extent feasible (Policy 5.3.2.1).

The region’s waste is primarily processed at HERC, NRG Newport and NSP Elk River. Total permitted capacity at these three facilities is estimated to be 1,165,000 tons. The percent of available capacity that is used at any point in time may fluctuate based on a variety of considerations, including markets.

**1. TONS OF MSW PROCESSED**



**Net Tons of MSW processed**

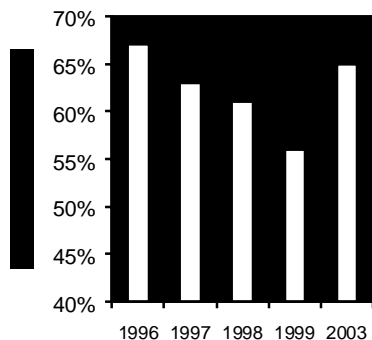
1996	1997	1998	1999	2003 (Outcome)
1,102,975	1,102,852	1,118,031	1,068,263	1,323,500

- Net tons of MSW (see description below) processed decreased by nearly 50,000 tons in 1999. A key reason for this decrease was the outage that occurred in the spring of 1999 at the NSP Elk River Facility due to a major turbine rebuilding effort that was required as a result of lightning damage in 1998.
- Appendix A shows that total tons delivered to processing facilities in 1999 was only 5,000 tons less than 1998, since waste continued to be delivered to processing facilities that could not be processed due to capacity limitations.

**About the Indicator**

Net tons of MSW are the tons of MSW delivered for processing that were actually processed. Excess and non-processible waste is MSW that was delivered to processing facilities or transfer stations for processing, but because of capacity or other constraints, could not be processed. Appendix A shows a breakdown of county specific MSW management, as well as a breakdown of processing and landfilling practices.

## 2. PERCENT OF AVAILABLE WASTE PROCESSED



Percent of available waste processed

1996	1997	1998	1999	2003 (Outcome)
67%	63%	61%	56%	65%

- As the amount of waste available for processing has grown and processing capacity remains the same, the percent of available waste processed continues to decline.

### About the Indicator

This percentage reflects the amount of waste available for processing (processed and landfilled waste) that was actually processed. Appendix A shows a breakdown of county specific MSW management, as well as a breakdown of processing and landfilling practices.

## 3. PROCESSING CNO Activities

This section shows progress on a sample of county negotiated outcomes for which counties have progress to report. All SWMCB counties participated fully in committing to CNOs during the master planning process, but the reporting on progress will occur at intervals, so only a portion of CNOs will be reported upon each year. Most CNOs are expected to be fully achieved by 2003.

**No Intermediate Outcome**

County	County Negotiated Outcome (CNO)	Measure	Activities / Outcomes to Date
Anoka	Optimize the amount of MSW processed (that is not reduced or recycled) at its contracted resource recovery facility through August 2009.	a. Staff designated to assist the SWMCB in planning for the development of regional processing capacity. b. NRG processes more than 85% of the waste delivered from Anoka County. c. Cooperate with the SWMCB's technical consultant in preparing the consultants phase 1 report on existing processing facilities. Forward the final report for consideration by the Resource Recovery Operations Committee and NRG.	a. B. Fields is participating with the Processing Committee in planning for the development of regional processing capacity. b. According to the Springsted Report received on April 10, the ERRRF processed 90% of the waste delivered in 1999. c. The consultant was hired, AC met with the consultant and provided relevant information. The report will be finalized in April.
Carver	Continue to offer a subsidy or financial incentives for processing.	Dollars budgeted and dollars spent on processing subsidy.	Four haulers have signed contracts to process waste.
Dakota	Work with public entities so that their waste is managed in accordance with the Policy Plan, the Master Plan and Minn. Stat. § 115A.45 and 115A.471.	Percentage of communities reporting that their hauler takes their waste to a processing facility.	Communities are required to have their waste processed as a condition of program funding. The County educates municipalities through a mailer once or twice a month year.
Hennepin	Maximize the amount of MSW that is processed into electricity through its contracted resources recovery facility through the year 2009 for the Elk River Resource Recovery Facility and 2019 for HERC which are the ends of the delivery agreement.	Number of tons processed into electricity.	During 1999, Hennepin County maximized the available capacity at both the HERC facility and the Elk River Resource Recovery Facility Contracted for the delivery of 365,000 tons of MSW to the HERC Facility and 225,000 tons to ERRRF.
Washington	Work with public entities so that their waste is managed in accordance with the Policy Plan, the Master Plan and Minn. §115A.46 and 115A.471.	The percentage of public entities in Washington County that are in compliance with the Public Entities Law and policies, based on a survey.	The County, the State of Minnesota and the City of Stillwater held meetings in the Fall of 1999 to discuss contracted residential waste going to a processing facility. The City of Stillwater contract requires waste to be delivered to a processing facility.

**Intermediate Outcome: By 2000, the region will complete an implementation plan to process MSW through 2017.**

County	County Negotiated Outcome (CNO)	Measure	Activities / Outcomes to Date
Anoka		Number of school districts and municipalities that have requirements in waste hauling contracts serving their facilities in accordance with the master plan.	AC surveyed the school districts and municipalities in February of 2000. Four of the six school districts responded. The four indicated that there was no contract language for disposal facilities. Six of the 21 municipalities have "county designated facility" in their contracts.
Hennepin	Hennepin County will take the lead role in monitoring the impact electric utility deregulation will have on the waste processing facilities used by the region.	Provide updates on deregulation activities and continue to track federal and state legislative activities	Hennepin County continues to track both federal and state legislative proposals related to electrical utility deregulation. The Metropolitan County Energy Taskforce has been formed to monitor deregulation activities.

**Intermediate Outcome: Through 2003, 100% of current metropolitan MSW processing capacity will continue to be fully utilized to process MSW not reduced or recycled.**

County	County Negotiated Outcome (CNO)	Measure	Activities / Outcomes to Date
Ramsey/ Washington	Ramsey and Washington Counties will work to assure a waste supply to the NRG-Newport facility that optimizes the amount of MSW processed (that is not reduced or recycled) from the two counties.	Whether contracts are in place with haulers, and the percentage of waste available from the County that is under contract.	Hauler contracts are in place for 2000. Total available MSW in Ramsey and Washington Counties in 1999: 542,904 tons; haulers under contract in 1999 brought in 382,906 tons or 71% of total available MSW. For 2000, haulers under contract are projected to bring in 354,079 tons.

**Intermediate Outcome: By 2003, metropolitan MSW processing capacity will increase by 158,500 tons up to a total annual MSW processing capacity of 1,323,500 tons.**

County	County Negotiated Outcome (CNO)	Measure	Activities / Outcomes to Date
Anoka	Work with NSP/NRG and the Resource Recovery Operations Committee to achieve efficiencies at the NSP-Elk River Resource Recovery Facility	Participate with the Resource Recovery Operations Committee to put plan in place for diverting non-processible or difficult-to-process waste from ERRRF.	Currently evaluating problem waste NRG has developed a list of problem wastes. The RROC is identifying recycling options.
Carver	Work to identify new processing capacity and non-conventional processing methods.	Amount of processing capacity identified.	Met with the City of Hutchison and negotiated capacity for organic waste.
Ramsey/ Washington	Work with NRG to increase processing capacity and efficiencies at the NRG-Newport facility.	Whether the County has worked with NRG on facility issues.	The Ramsey/Washington County Resource Recovery Project retained Foth and Van Dyke to assist in examining the waste stream and ways that operational efficiencies could be gained. One result was modified definition of 'Acceptable Waste' in hauler contracts, eliminating some problem waste streams. Another results in NRG working with a major industrial waste generator to preprocess waste before delivery, reducing transfer of unprocessable waste from Newport.

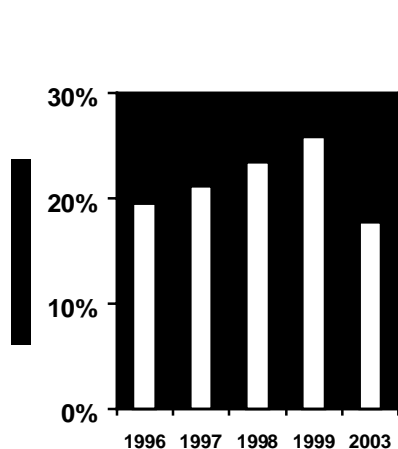
# LANDFILLING

**PRINCIPAL OUTCOME:** Capacity for MSW will be available in sanitary landfills through the year 2017 for MSW that cannot be reduced, recycled, or processed.

## Introduction

Landfills have a role in the integrated solid waste management system and sufficient capacity is needed for waste that cannot be reduced, recycled or processed. However, landfilling is the least preferred management strategy. The Policy Plan recognizes that the private sector has primary responsibility for the delivery of landfilling services (Policy 5.4.2.2). The region's role will be that of system assessment.

## 1. AMOUNT OF MSW LANDFILLED



Amount of MSW landfilled

Material	1996	1997	1998	1999	2003 (Outcome)
In-State	188,379	197,722	347,153	346,973	N/A
Out-of-State	264,482	254,596	256,968	314,830	N/A
Excess and Non-processibles	103,354	172,734	119,433	165,130	N/A
<b>Total</b>	<b>556,215</b>	<b>625,052</b>	<b>723,554</b>	<b>826,933</b>	<b>599,500</b>
<b>% of total MSW Landfilled</b>	<b>19.6%</b>	<b>21.2%</b>	<b>23.4%</b>	<b>25.9%</b>	<b>17.8%</b>

- Landfilling has grown significantly over time. In 1999, the region landfilled 103,400 more tons than in 1998, and increase of 14%, and 271,000 tons more than in 1996, an increase of 49%. 1999 landfilling exceeded the 2003 outcome level projected in the Master Plan by 227,000 tons.
- The increase in landfilling from 1998 to 1999 resulted largely from increases in waste landfilled out-of-State, and excess and non-processibles landfilled from processing facilities. Out-of-state landfilling was impacted by the actions of a large hauler that now routinely delivers metro MSW to landfills located out of Minnesota.
- Tons of unprocessed waste landfilled in-State remained about the same.

### About the Indicator

Excess and non-processibles are wastes that were delivered to the processing facility or transfer station, but were not able to be processed due to capacity constraints or other operational issues.

## 2. LANDFILLING CNO ACTIVITIES

This section shows progress on a sample of county negotiated outcomes for which counties have progress to report. All SWMCB counties participated fully in committing to CNOs during the master planning process, but the reporting on progress will occur at intervals, so only a portion of CNOs will be reported upon each year. Most CNOs are expected to be fully achieved by 2003.

### *No Intermediate Outcome:*

County	County Negotiated Outcome (CNO)	Measure	Activities / Outcomes to Date
Dakota	Regulate sanitary landfills that receive MSW and are located within its County boundaries to protect the environment and public health.	Number of inspections conducted. Number of corrective actions taken at landfills in response to county enforcement actions.	Written compliance notices are given and corrective actions are taken by the facilities. 48 compliance inspections occurred in 1999. 15 written compliant notices were given to the two MSW landfills in 1999.
Carver	Work with public entities within its county so that the public entities use responsible waste management principles when arranging for landfilling of waste.	Number of public entities contacted with information on responsive landfilling.	Distributed information in December 1999 regarding Public Entities to all school, cities and townships. Distributed information March 2000. 2 school districts, Waconia and Chaska, have begun to comply with Public Entities Law.
Dakota	Emphasize reuse and recycling in order to optimize the available capacity at landfills.	% decrease in MSW disposed (not reduced or recycled) per person.	Featured information from OEA's waste reduction campaign in public ed for teachers and residents. MSW disposed (not recycled or reduced) increased slightly from .62 tons per person in 1998 to .63 tons per person in 1999 – an increase of 1.6% per person. The two landfills located in Dakota County have up to 8 years of capacity remaining.

# SOLID WASTE REGULATION

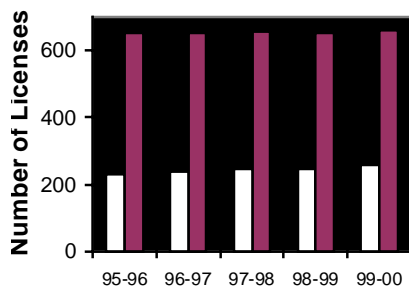
**PRINCIPAL OUTCOME:** The Master Plan does not contain an outcome for solid waste regulation.

## Introduction

The Policy Plan indicates that an integrated solid waste management system requires responsible solid waste collection practices that protect the public health, safety and welfare. The State, region, counties, cities, towns, waste collectors and waste generators should work together on solid waste collection issues (Policy 5.6.2.1). To that end, the metropolitan counties, through the SWMCB regional hauler licensing program, regulate the collection and transportation of MSW within and between member counties.

The Regional Hauler Licensing Program which began in 1995 provides for the issuance of one base license by the county in which the hauler is based and an operating license by each county in which a hauler operates. The base license provisions, including insurance requirements, fees, hauler application form and license year are consistent throughout the region. Each county involved in the regional hauler licensing program has individual authority to enforce licensing requirements and/or take action against a hauler violating such requirements.

## 1. REGIONAL HAULER LICENSES ISSUED



**Number Of Base And Operating Licenses Issued**

	1995-96	1996-97	1997-98	1998-99	1999-2000
<b>Base</b>	231	238	247	245	259
<b>Operating</b>	651	652	657	650	661

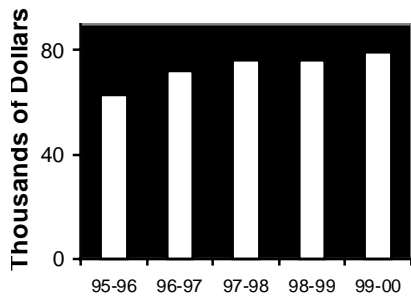
Source: SWMCB Regional Hauler License Program Annual Reports.

- License fees collected increased by \$3,590 for the 1999/2000 license period. The number of base and operating licenses issued has increased gradually since the program began in 1995.
- The license year begins on July 1 and ends on June 30.

### About the Indicator

The number of licenses issued changes throughout the year. Though applications for the following license year are due May 1 of each year, licenses are also issued upon request throughout the year because new haulers enter the market, mergers and acquisitions occur and requests for changes to the hauler's area of operation are made. Self haulers are also included in the license data. The indicator represents the number of haulers licenses in August of each year.

## 2. LICENSE FEES COLLECTED



### License Fees Collected

1995-96	1996-97	1997-98	1998-99	1999-2000
\$62,950	\$72,350	\$76,150	\$76,100	\$79,690

Source: SWMCB Regional Hauler License Program Annual Reports.

- License fees collected increased by \$3,590 for the 1999/2000 license period.

### About the Indicator

The fees collected do not include late application fees.

# NonMSW MANAGEMENT

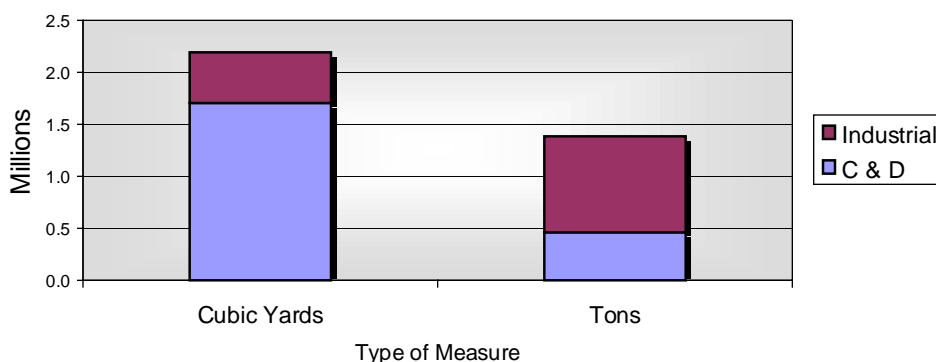
**PRINCIPAL OUTCOME:** By 2003, the region will see an increase in the reduction, reuse, recycling or processing of nonMSW to preserve landfill capacity as a resource.

## Introduction

The 1998-2017 Master Plan recognized that nonMSW should receive greater attention in regional planning efforts than it has in prior periods. In order to develop nonMSW policies and programs, however, it will be necessary to collect data, evaluate environmental impacts and regulatory issues, and identify best management practices. For this reason, collection and analysis of better data on nonMSW is a major focus of SWMCB work in this area.

### 1. QUANTITIES OF NonMSW MANAGED AT SELECT FACILITIES IN 1998 (cubic yards)

In 1999, the SWMCB NonMSW Task Force collected data on construction/demolition waste and industrial waste managed at select facilities in 1998. These facilities included construction/demolition and industrial landfills located in or near the metro area.



Source: Facility Reports submitted to the MPCA

- Most of the waste delivered to the select facilities was landfilled (97% of the amount reported in cubic yards, and 100% of the waste reported in tons).

#### About the Indicator

Since nonMSW is measured by facilities in both cubic yards and tons, and conversion to one unit of measure is not presently possible, the data must be shown in two parts, which cannot be added together. In addition, several caveats regarding this data should be understood before it is used, as outlined in the NonMSW Report submitted to the SWMCB in March 2000. These caveats include the fact that nonMSW that is beneficially reused, such as wastes that are landspread, are not included in the wastes reported by select facilities to the MPCA.

## 2. NonMSW CNO ACTIVITES

This section shows progress on a sample of county negotiated outcomes for which counties have progress to report. All SWMCB counties participated fully in committing to CNOs during the master planning process, but the reporting on progress will occur at intervals, so only a portion of CNOs will be reported upon each year. Most CNOs are expected to be fully achieved by 2003.

***Principal Outcome: By 2003, the region will see an increase in the reduction, reuse, recycling or processing of nonMSW to preserve landfill capacity.***

County	County Negotiated Outcome (CNO)	Measure	Activities / Outcomes to Date
Dakota	Take the lead in the region in compiling data that the region can use in achieving the outcomes of the Master Plan including the potential for alternative management practices for nonMSW.	In coordination with other counties, a process for annual collection of regional data on nonMSW exists.	Information on current reporting to counties and the State was compiled in 1999.

***Intermediate Outcome: By 2003, 75% of public entities in the region will implement additional strategies to reduce, reuse, recycle or process nonMSW waste generated through public sector activities from information obtained in the assessment of the nonMSW stream.***

County	County Negotiated Outcome (CNO)	Measure	Activities / Outcomes to Date
Carver	Implement one or more additional strategies by 2003 to reduce, reuse, recycle or process portions of the nonMSW stream generated by county activities.	Consider subsidy for haulers to process recycle of construction waste.	SWAC approved 3/16 proposal to offer subsidy for construction waste generated in the county.
Dakota	Undertake efforts so that public entities in the county will be in a position to implement one or more additional strategies to reduce, reuse, recycle or process portions of the nonMSW stream.	Number of public entities in Dakota County provided information on green buildings and nonMSW management.	Staff have discussed opportunities with 2 departments (Facilities Mgmt & Parks). The Green Institute evaluated a Parks building for deconstruction  Local Solid Waste Staff (8 cities) attended a presentation by the Neighborhood Energy Consortium on the green building aspects of their new office. The County will share its new Sustainable Building Standards with municipalities and school districts once they have been adopted this spring.
Washington	Implement one or more additional strategies by 2003 to reduce, reuse, recycle or process portions of the nonMSW stream generated by county activities.	Number of best management practices developed and implemented in the County.	Developed tonnage baseline data and methodology.

**Intermediate Outcome: By 2003, markets for processing and recycling of nonMSW will be further developed.**

County	County Negotiated Outcome (CNO)	Measure	Activities / Outcomes to Date
Carver	Assess the potential for reduction, recycling, reuse or processing of materials in county deconstruction and remodeling projects.	Change bid process to require contractors to commit to, where practical, recovery and recycling of specific building materials.	Develop resolution. County Board pass resolution requiring all county generated construction and wood waste be processed and not landfilled.
Hennepin	Collaborate with Green Institute, and take the lead in the region's efforts in developing residential and commercial deconstruction projects to increase the recycling and reuse of nonMSW material.	Volume of nonMSW materials from deconstruction projects that are recycled or reused.	In 1999, HC contracted with the Green Institute to process materials recovered from deconstruction projects. During 1999, the Green Institute recovered 721 cabinets; 773 doors; 3,970 lineal feet of lumber and 2,920 lineal feet of mill work from deconstruction projects. For a complete list of materials recovered from deconstruction projects, please contact the CNO contact person.

**Intermediate Outcome: By 2005, 80% of the region's public entities will evaluate and where feasible, incorporate sustainable architectural guidelines in the planning process for construction and remodeling of government buildings.**

County	County Negotiated Outcome (CNO)	Measure	Activities / Outcomes to Date
Carver	Evaluate and, where feasible, incorporate by December 31, 2005, sustainable architectural services for the construction and remodeling of all County government buildings and other County projects using public financing.  Undertake efforts so that public entities in the county incorporate sustainable architectural guidelines in the planning process for the construction and remodeling of all government buildings, including projects using public financing.	Number of projects undertaken using sustainable architectural guidelines.  Architectural and construction services contract language guidelines have been provided to all public entities.	Received a grant to become a pilot for the MN Sustainable design guide for the construction of its HHW facility. Planning to use sustainable design practices to construct the new Public Works central shed.  Researching other counties' sustainable design and building guidelines for adoption by Carver County.
Dakota	Evaluate and, where feasible, incorporate by December 31, 2005, sustainable architectural services for the construction and remodeling of all County government buildings and other County projects using public financing.	New building standards for Dakota County government buildings. Number of Dakota County projects undertaken.	The 100% Draft of the Dakota County Sustainable Design and Building Guidelines is received. Final critique and editing are now taking place. The Draft Guidelines are incorporated into the Draft Dakota County Design and Construction Standards, which will be placed on the County Board agenda in the second quarter.  1 project completed – a small remodeling project utilized wheatboard for cabinetry. 1 in progress in 1999. The draft Dakota County Sustainable Design and Building Guidelines are being applied on the County's new Northern Service Center.
Hennepin	In partnership with the University of Minnesota and with regional assistance, complete and maintain the Sustainable Building Design Guide and Rating System	By the end of 1999, the initial design guide will be published and made available to the public.	The Sustainable Design Guide has been published and is available at <a href="http://www.sustainabledesignguide.umn.edu">www.sustainabledesignguide.umn.edu</a>